



Flygt 2620.281

Table of Contents

1 Introduction.....	2
1.1 Specially approved products.....	2
2 Product Description.....	3
2.1 Products included.....	3
2.2 The data plate.....	3
2.3 Product denomination.....	3
3 Spare Parts.....	5
3.1 Exploded view.....	5
3.2 List of parts.....	6

1 Introduction

Purpose of this manual

The purpose of this manual is to provide necessary information on spare parts and accessories order.

Disclaimer

Always use genuine Flygt parts. The use of other spare parts or accessories can invalidate any claims for warranty or compensation. Xylem does not take any responsibility for damages that are caused by the use of non-original parts. For more information, contact your local sales and service representative.

Data for ordering spare parts

The following information is needed for spare part orders:

- Serial number of the product
- Part number
- Quantity of bulk material, see * in tables

1.1 Specially approved products

Qualification of personnel

Only Xylem or Xylem-authorized service personnel may undertake repair work on Ex-approved products.

Dimensional accuracy inspection

Spare parts marked with (Ex) after the part number are subject to dimensional accuracy inspection.

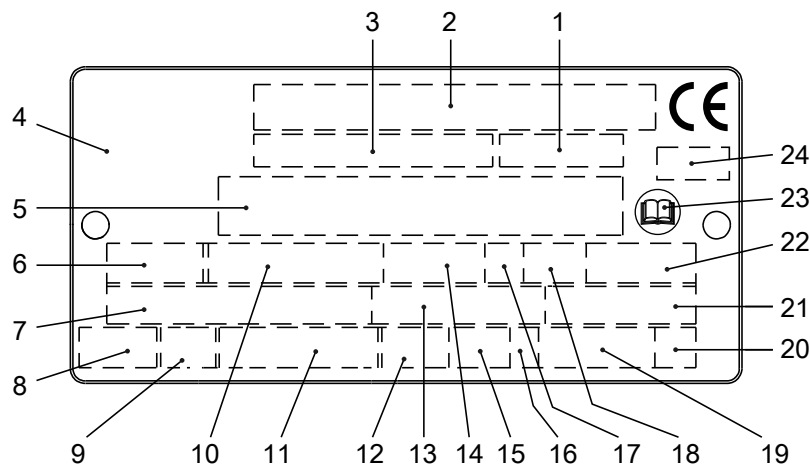
2 Product Description

2.1 Products included

Pump model	Standard	EX	MSHA	Drainage	Sludge
2620.281	X				X

2.2 The data plate

The data plate is a metal label that is located on the main body of the products. The data plate lists key product specifications. Specially approved products also have an approval plate.



1. Curve code or Propeller code
2. Serial number
3. Product number
4. Country of origin
5. Additional information
6. Phase; type of current; frequency
7. Rated voltage
8. Thermal protection
9. Thermal class
10. Rated shaft power
11. International standard
12. Degree of protection
13. Rated current
14. Rated speed
15. Maximum submergence
16. Direction of rotation: L=left, R=right
17. Duty class
18. Duty factor
19. Product weight
20. Locked rotor code letter
21. Power factor
22. Maximum ambient temperature
23. Read installation manual
24. Notified body, only for EN-approved Ex products

Figure 1: The data plate

2.3 Product denomination

Reading instruction

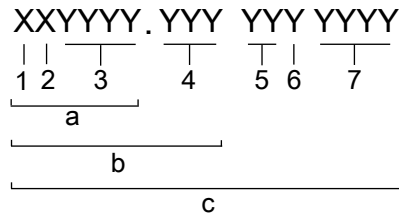
In this section, code characters are illustrated accordingly:

X = letter

Y = digit

The different types of codes are marked up with a, b and c. Code parameters are marked up with numbers.

Codes and parameters

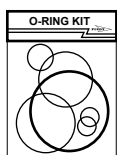
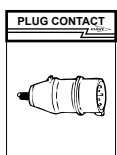
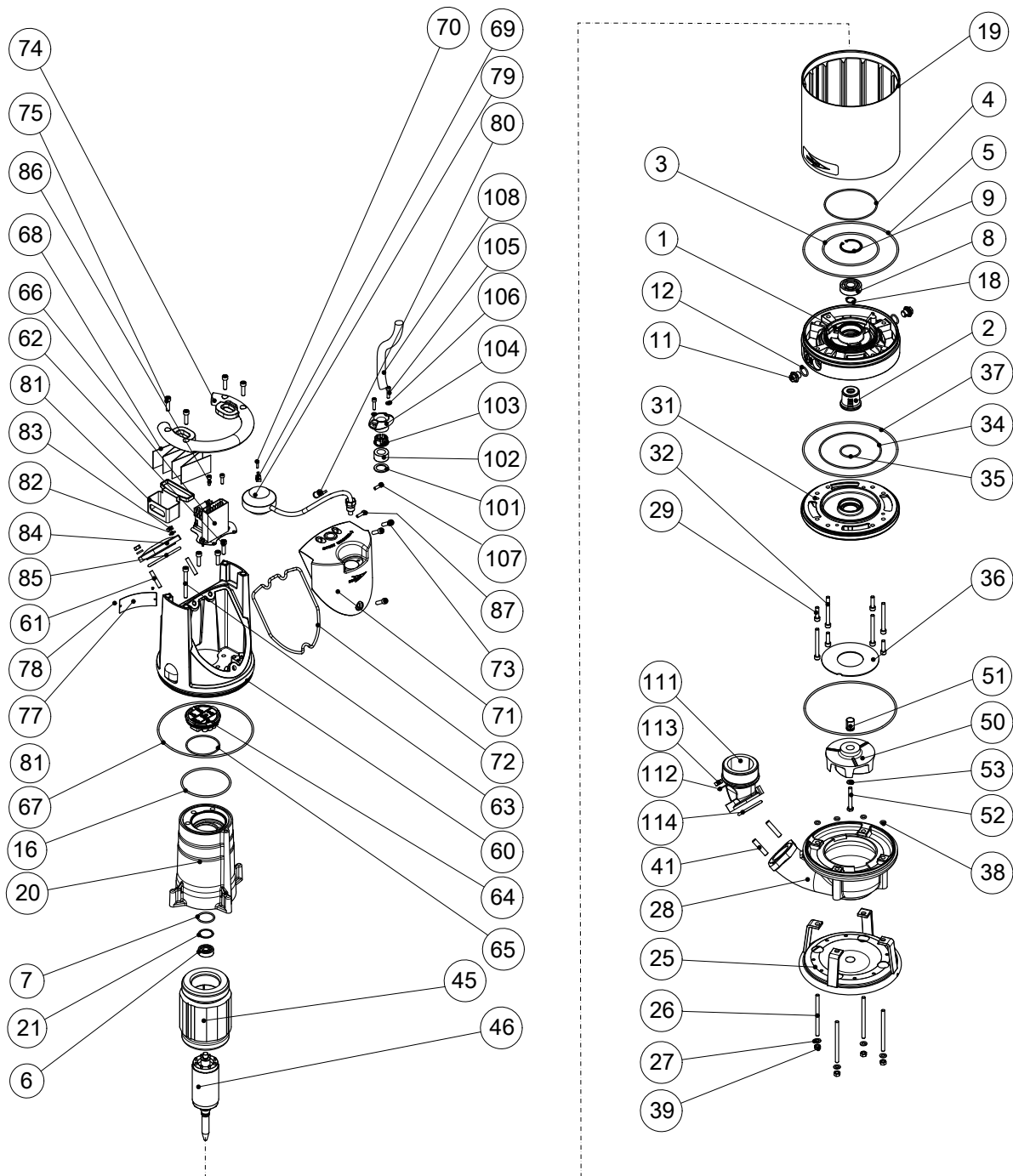


WS006265B

Type of Callout	Number	Indication
Type of code	a	Sales denomination
	b	Product code
	c	Serial number
Parameter	1	Hydraulic end
	2	Type of installation
	3	Sales code
	4	Version
	5	Production year
	6	Production cycle
	7	Running number

3 Spare Parts

3.1 Exploded view



20122B_2620_281_expl_view

3.2 List of parts

Pos. No	Part. No	Denomination	Qty/Version	
			281	
1	770 58 00	Intermediate piece	1	
2	769 52 00	Mechanical seal	1	
3	82 78 23	O-ring 127.0X4.0 NBR	1	
4	82 74 77	O-ring 119.5X3 NBR	1	
5	82 75 11	O-ring 215.0X4.0 NBR	1	
6	83 33 11	Ball bearing 12X37X12 MM	1	
7	82 81 00	O-ring 36.2X3.0 FPM	1	
8	83 33 13	Ball bearing 20X52X15 MM	1	
9	83 07 69	Retaining ring	1	
11	428 22 17	Inspection screw	2	
12	82 73 90	O-ring 19.2X3 NBR	2	
14	90 17 52	Oil ISO VG 32	*	
16	80 00 25	O-ring 114X4.0 NBR	1	
17	718 05 00	Sticker CUT HAZARD	1	
18	82 58 92	Retaining ring SGA 20	1	
19	770 61 00	Outer casing	1	
20	770 55 00	Stator housing	1	
21	82 56 29	Spring washer	1	
25	710 57 00	Stand	1	
26	80 95 03	Stud	4	
27	82 35 74	Plain washer 8-A4-170HV	4	
28	711 12 01	Pump housing	1	
29	82 00 35	Hex.socket hd screw M8X30-A2-70	4	
31	760 04 00	Seal housing cover	1	
32	83 85 19	Hex.socket hd screw M8X80-A2-70	4	
34	82 74 81	O-ring 139.5X3 NBR	1	
35	82 74 00	O-ring 44.2X3 NBR	1	
36	718 77 00	Guide plate	1	
37	82 75 11	O-ring 215.0X4.0 NBR	2	
38	81 79 02	O-ring 8X3 NBR	4	
39	82 23 32	Hexagon nut M8-A4-70	4	
41	80 95 07	Stud 10X35-A2-70	2	
45	638 95 11	Stator 13-10-2b	6-leads 3-phase 60 Hz 2-poles 200V-208V Y	1
45	638 95 01	Stator 13-10-2b	6-leads 3-phase 50 Hz 2-poles 220V-240V D 6-leads 3-phase 50 Hz 2-poles 380V-400V Y 6-leads 3-phase 60 Hz 2-poles 440V-480V Y	1
45	638 95 08	Stator 13-10-2b	6-leads 3-phase 60 Hz 2-poles 220V-240V D 6-leads 3-phase 60 Hz 2-poles 380V-400V Y	1

Pos. No	Part. No	Denomination	Qty/Version	
			281	
45	638 95 06	Stator 13-10-2b	9-leads 3-phase 60 Hz 2-poles 220V-240V Y// 9-leads 3-phase 60 Hz 2-poles 440V-480V YSER	1
45	638 95 16	Stator 13-10-2b	12-leads 3-phase 60 Hz 2-poles 440V-460V DSER 12-leads 3-phase 60 Hz 2-poles 380V-400V Y// 12-leads 3-phase 60 Hz 2-poles 220V-230V D//	1
45	638 95 18	Stator 13-10-2b	3-leads 3-phase 50 Hz 2-poles 380V-400V Y 3-leads 3-phase 60 Hz 2-poles 440V-480V Y	1
45	638 95 03	Stator 13-10-2b	6-leads 3-phase 50 Hz 2-poles 415V-440V Y	1
45	638 95 17	Stator 13-10-2b	3-leads 3-phase 50 Hz 2-poles 525V-550V Y 3-leads 3-phase 50 Hz 2-poles 500V Y 3-leads 3-phase 60 Hz 2-poles 575V-600V Y	1
45	638 96 01	Stator 13-10-2b	4-leads 1-phase 50 Hz 2-poles 220V-240V	1
45	638 96 03	Stator 13-10-2b	4-leads 1-phase 60 Hz 2-poles 220V-240V	1
46	770 70 00	Shaft unit		1
50	718 67 10	Impeller	233 D-impeller MT 50Hz 1-phase Maximum temperature 40 DC Material Hard-Iron TM	1
50	705 90 10	Impeller	234 D-impeller MT 50Hz 3-phase Maximum temperature 40 DC Material Hard-Iron TM	1
50	705 90 12	Impeller	235 D-impeller MT 60Hz 1-phase Maximum temperature 40 DC Material Hard-Iron TM	1
50	705 90 11	Impeller	236 D-impeller MT 60Hz 3-phase Maximum temperature 40 DC Material Hard-Iron TM	1
51	771 70 00	Sleeve unit		1
52	81 56 58	Hexagon head screw M8X60-A4-80		1
53	82 35 74	Plain washer 8-A4-170HV		1
60	777 60 00	Cover unit		1
	60,1 706 11 00	Air release valve		1
	60,2 770 51 00	Main cover		1
61	84 46 13	Stud M8X45-A2-70		2
62	82 00 35	Hex.socket hd screw M8X30-A2-70		3
63	83 85 19	Hex.socket hd screw M8X80-A2-70		1
64	773 44 01	Terminal plate unit	1-phase	1
64	773 44 00	Terminal plate unit	3-phase	1
65	82 74 68	O-ring 74.5X3.0 NBR		1

Pos. No	Part. No	Denomination	Qty/Version
			281
66	770 71 18	Starter unit	1
		Contactor unit 50Hz 1-phase 220V - 240V 1-phase Not CSA approved	
		Contactor unit 50Hz 3-phase 220V - 240V Not CSA approved	
		Contactor unit 60Hz 3-phase 220V - 240V CSA approved	
		Contactor unit 60Hz 1-phase 220V - 240V 1-phase CSA approved	
		Contactor unit 60Hz 3-phase 220V - 240V Float switch CSA approved	
		Contactor unit 50Hz 3-phase 220V - 240V Float switch Not CSA approved	
	66,1 770 46 00	Holder	1
	66,5 83 99 96	Contactor	1
	66,8 81 99 86	Hex.socket hd screw M4X16-A2-70	2
	66,9 82 26 69	Lock nut	2
	66,13 773 42 03	Cable set	1
	66,14 773 42 04	Cable set	1
	66,15 573 58 03	Electric cable AWG 16;L=70MM CSA	1
	66,16 773 42 06	Cable set	1
66	770 71 19	Starter unit	1
		Contactor unit 50Hz 3-phase 200V - 208V Not CSA approved	
	66,1 770 46 00	Holder	1
	66,5 83 00 61	Contactor	1
	66,8 81 99 86	Hex.socket hd screw M4X16-A2-70	2
	66,9 82 26 69	Lock nut	2
	66,13 773 42 03	Cable set	1
	66,14 773 42 04	Cable set	1
	66,15 573 58 03	Electric cable AWG 16;L=70MM CSA	1
	66,16 773 42 06	Cable set	1
66	770 71 20	Starter unit	1
		Contactor unit 50Hz 3-phase 380V - 400V Not CSA approved	
		Contactor unit 60Hz 3-phase 380V - 400V CSA approved	
		Contactor unit 50Hz 3-phase 380V - 400V Float switch Not CSA approved	
	66,1 770 46 00	Holder	1
	66,5 83 99 72	Contactor	1
	66,8 81 99 86	Hex.socket hd screw M4X16-A2-70	2
	66,9 82 26 69	Lock nut	2
	66,13 773 42 03	Cable set	1
	66,14 773 42 04	Cable set	1
	66,15 573 58 03	Electric cable AWG 16;L=70MM CSA	1
	66,16 773 42 06	Cable set	1
66	770 71 21	Starter unit	1
		Contactor unit 50Hz 3-phase 415V - 440V Not CSA approved	
		Contactor unit 60Hz 3-phase 440V - 480V CSA approved	

Pos. No	Part. No	Denomination	Qty/Version
			281
	66,1 770 46 00	Holder	1
	66,4 762 56 00	Motor protector	1
	66,5 83 99 73	Contactactor	1
	66,6 81 99 86	Hex.socket hd screw M4X16-A2-70	2
	66,7 82 26 69	Lock nut	2
	66,8 81 99 86	Hex.socket hd screw M4X16-A2-70	2
	66,9 82 26 69	Lock nut	2
	66,12 773 42 02	Cable set	1
	66,14 773 42 04	Cable set	1
	66,16 773 42 06	Cable set	1
	66,17 573 58 62	Single-core cable	1
66	770 71 22	Starter unit	1
		Contactactor unit 50Hz 3-phase 500V - 500V Not CSA approved	
	66,1 770 46 00	Holder	1
	66,5 83 99 74	Contactactor	1
	66,8 81 99 86	Hex.socket hd screw M4X16-A2-70	2
	66,9 82 26 69	Lock nut	2
	66,13 773 42 03	Cable set	1
	66,14 773 42 04	Cable set	1
	66,15 573 58 03	Electric cable AWG 16;L=70MM CSA	1
	66,16 773 42 06	Cable set	1
66	770 71 23	Starter unit	1
		Contactactor unit 50Hz 3-phase 525V - 550V Not CSA approved	
	66,1 770 46 00	Holder	1
	66,4 762 56 00	Motor protector	1
	66,5 83 99 74	Contactactor	1
	66,6 81 99 86	Hex.socket hd screw M4X16-A2-70	2
	66,7 82 26 69	Lock nut	2
	66,8 81 99 86	Hex.socket hd screw M4X16-A2-70	2
	66,9 82 26 69	Lock nut	2
	66,12 773 42 02	Cable set	1
	66,14 773 42 04	Cable set	1
	66,16 773 42 06	Cable set	1
	66,17 573 58 62	Single-core cable	1
66	770 71 24	Starter unit	1
		Contactactor unit 60Hz 3-phase 575V - 600V CSA approved	
	66,1 770 46 00	Holder	1
	66,4 762 56 00	Motor protector	1
	66,5 83 00 68	Contactactor	1
	66,6 81 99 86	Hex.socket hd screw M4X16-A2-70	2
	66,7 82 26 69	Lock nut	2
	66,8 81 99 86	Hex.socket hd screw M4X16-A2-70	2
	66,9 82 26 69	Lock nut	2
	66,12 773 42 02	Cable set	1
	66,14 773 42 04	Cable set	1

Pos. No	Part. No	Denomination	Qty/Version	
			281	
66,16	773 42 06	Cable set	1	
66,17	573 58 62	Single-core cable	1	
66	770 71 15	Starter unit	Capacitor unit 60Hz 1-phase 220V - 240V 1-phase Float switch CSA approved	1
			Capacitor unit 60Hz 1-phase 220V - 240V 1-phase CSA approved	
			Capacitor unit 50Hz 1-phase 220V - 240V 1-phase Float switch Not CSA approved	
			Capacitor unit 50Hz 1-phase 220V - 240V 1-phase Not CSA approved	
66,1	770 46 00	Holder	1	
66,2	781 83 01	Capacitor	1	
66,3	83 88 57	Capacitor 20MF 400V	1	
66,4	727 43 00	Start relay	1	
66,6	81 99 86	Hex.socket hd screw M4X16-A2-70	2	
66,7	82 26 69	Lock nut	2	
66,10	717 51 00	Cable set	1	
66,11	773 42 01	Cable set	1	
66,12	773 42 02	Cable set	1	
66,19	82 27 27	Lock nut M8-A4-70	2	
67	82 75 11	O-ring 215.0X4.0 NBR	1	
68	773 45 02	Connection plate	1	
69	773 46 00	Thermal detector unit	1	
70	81 99 86	Hex.socket hd screw M4X16-A2-70	1	
71	770 52 00	Cover	1	
71	770 52 01	Cover	1	
72	770 75 00	Gasket	1	
73	82 00 35	Hex.socket hd screw M8X30-A2-70	3	
74	770 53 00	Handle	1	
75	82 00 35	Hex.socket hd screw M8X30-A2-70	4	
77	630 68 00	Data plate USE 6306801 AS SPARE PART	1	
78	82 20 88	Drive screw 4X5-A2/A4	2	
79	761 04 05	Level regulator unit EU	1	
		Capacitor unit 50Hz 1-phase 220V - 240V 1-phase Float switch Not CSA approved		
		Contacteur unit 50Hz 3-phase 220V - 240V Float switch Not CSA approved		
79	761 04 06	Level regulator unit EU	1	
		Contacteur unit 50Hz 3-phase 380V - 400V Float switch Not CSA approved		
79	761 04 07	Level regulator unit US/CDN	1	
		Capacitor unit 60Hz 1-phase 220V - 240V 1-phase Float switch CSA approved		
		Contacteur unit 60Hz 3-phase 220V - 240V Float switch CSA approved		
80	84 66 53	Cable clamp STAINLESS STEEL, CR	1	
82	82 37 03	Plain washer A2-170HV M8	2	

Pos. No	Part. No	Denomination	Qty/Version
			281
83	82 23 32	Hexagon nut M8-A4-70	2
84	706 26 02	Cover	1
85	82 74 08	O-ring 79.2X5.7-NBR	1
86	82 00 15	Hex.socket hd screw M6X20-A2-70	2
87	82 00 15	Hex.socket hd screw M6X20-A2-70	1
87	82 00 15	Hex.socket hd screw M6X20-A2-70	2
90	83 49 43	Plug contact	1
		3-phase 50 Hz 380V - 415V Current range: 0 - 16A Plug combined with short cable: No cable Supply connection: CEE 5-PLUG 16A	
90	83 49 45	Plug contact	1
		3-phase 50 Hz 380V - 415V Current range: 0 - 16A Plug combined with short cable: No cable Supply connection: CEE 4-PLUG 16A	
90	83 49 91	Plug contact	1
		1-phase 60 Hz 0V - 250V Current range: 0 - 15A Plug combined with short cable: No cable Supply connection: Plug NEMA 6-15 15A 250V	
		1-phase 60 Hz 0V - 250V Current range: 0 - 15A Plug combined with short cable: SUBCAB 14AWG/3 Supply connection: Plug NEMA 6-15 15A 250V	
90	83 74 43	Cable with plug	1
		1-phase 50 Hz 0V - 250V Current range: 0 - 16A Plug combined with short cable: SUBCAB 3G1,5 Supply connection: Plug 532.1U	
90	84 06 65	Plug contact	1
		1-phase 50 Hz 220V - 240V Current range: 0 - 16A Plug combined with short cable: SUBCAB 3G1,5 Supply connection: CEE 3-PLUG 16A	
		1-phase 50 Hz 220V - 240V Current range: 0 - 16A Plug combined with short cable: No cable Supply connection: CEE 3-PLUG 16A	
90	83 49 59	Plug contact	1
		1-phase 50 Hz 0V - 250V Current range: 0 - 10A Plug combined with short cable: No cable Supply connection: Plug T12 SEV1011 L+N+PE, 250 V 10 A	
91	94 21 00	Motor cable subcab	*
		Plug contact 1-phase 60 Hz 0V - 250V Current range: 0 - 15A Plug combined with short cable: SUBCAB 14AWG/3 Supply connection: Plug NEMA 6-15 15A 250V	
91	94 20 40	Motor cable subcab	*
		Plug contact 1-phase 50 Hz 220V - 240V Current range: 0 - 16A Plug combined with short cable: SUBCAB 3G1,5 Supply connection: CEE 3-PLUG 16A	
101	82 40 61	Plain washer (10)-22 MM	1

Pos. No	Part. No	Denomination	Qty/Version
			281
102	84 37 95	Seal sleeve (10)-12 MM	1
		SUBCAB 3G1,5 10 - 11mm Max 750V SUBCAB 3G2,5 11 - 12mm Max 750V SUBCAB 3G1,5 10 - 11mm Supply connection: Plug 532.1U Max 250V SUBCAB 4G1,5 10,50 - 11,50mm Max 750V	
102	84 37 97	Seal sleeve (14)-16 MM	1
		SUBCAB 4G1,5+2x1,5 16 - 17mm Max 750V SUBCAB 14AWG/4 14,20 - 15,20mm Max 600V Screened 3x1,5 13,50 - 14,90mm Max 1000V	
102	84 37 96	Seal sleeve (12)-14 MM	1
		SUBCAB 4G2,5 12,50 - 13,50mm Max 750V SUBCAB 14AWG/3 13,20 - 14,20mm Max 600V Screened 3x1,5 13,50 - 14,90mm Max 1000V	
102	84 37 99	Seal sleeve (18)-20 MM	1
		SUBCAB S3x2,5+3x2,5/3+S(4x0,5) 18 - 20mm Max 1000V SUBCAB 14AWG/7 18 - 20mm Max 600V	
102	84 37 98	Seal sleeve (16)-18 MM	1
		SUBCAB 12AWG/4 17 - 18mm Max 600V	
103	678 58 12	Cable clip (10)-12 MM	1
		SUBCAB 3G1,5 10 - 11mm Max 750V SUBCAB 3G2,5 11 - 12mm Max 750V SUBCAB 3G1,5 10 - 11mm Supply connection: Plug 532.1U Max 250V SUBCAB 4G1,5 10,50 - 11,50mm Max 750V	
103	678 58 16	Cable clip (14)-16 MM	1
		SUBCAB 4G1,5+2x1,5 16 - 17mm Max 750V SUBCAB 14AWG/4 14,20 - 15,20mm Max 600V Screened 3x1,5 13,50 - 14,90mm Max 1000V	
103	678 58 14	Cable clip (12)-14 MM	1
		SUBCAB 4G2,5 12,50 - 13,50mm Max 750V SUBCAB 14AWG/3 13,20 - 14,20mm Max 600V Screened 3x1,5 13,50 - 14,90mm Max 1000V	
103	678 58 20	Cable clip (18)-20 MM	1
		SUBCAB S3x2,5+3x2,5/3+S(4x0,5) 18 - 20mm Max 1000V SUBCAB 14AWG/7 18 - 20mm Max 600V	
103	678 58 18	Cable clip (16)-18 MM	1
		SUBCAB 12AWG/4 17 - 18mm Max 600V	
104	686 87 00	Entrance flange	1
105	83 02 79	Hex.socket hd screw M6X25-A4-70	2
106	82 35 73	Plain washer 6-A4-170	2

Pos. No	Part. No	Denomination	Qty/Version
			281
107	82 00 15	Hex.socket hd screw M6X20-A2-70	1
107	82 00 15	Hex.socket hd screw M6X20-A2-70	2
108	773 47 01	Motor cable unit SUBCAB 3G1,5 10 - 11mm L= 20m Supply connection: Plug 532.1U Max 250V	1
108	773 47 02	Motor cable unit SUBCAB 3G1,5 10 - 11mm L= 20m Max 750V	1
108	773 47 05	Motor cable unit SUBCAB 4G1,5 10,50 - 11,50mm L= 20m Max 750V	1
108	773 47 10	Motor cable unit SUBCAB 4G1,5+2x1,5 16 - 17mm L= 20m Max 750V	1
108	773 47 06	Motor cable unit SUBCAB 4G2,5 12,50 - 13,50mm L= 20m Max 750V	1
108	773 47 03	Motor cable unit SUBCAB 3G2,5 11 - 12mm L= 20m Max 750V	1
108	773 47 04	Motor cable unit SUBCAB 14AWG/3 13,20 - 14,20mm L= 16m Max 600V	1
108	773 47 07	Motor cable unit SUBCAB 14AWG/4 14,20 - 15,20mm L= 16m Max 600V	1
108	773 47 15	Motor cable unit SUBCAB 14AWG/7 18 - 20mm L= 16m Max 600V	1
108	773 47 08	Motor cable unit SUBCAB 12AWG/4 17 - 18mm L= 16m Max 600V	1
108	773 47 09	Motor cable unit Screened 3x1,5 13,50 - 14,90mm L= 20m Max 1000V	1
108	773 47 19	Motor cable unit SUBCAB S3x2,5+3x2,5/3+S(4x0,5) 18 - 20mm L= 20m Max 1000V	1
110	83 18 46	Coupling part	1
111	710 53 06	Discharge connection DN 75 Hose Thread: ISO G3A Outer Second outlet included aluminium DN 75 Hose 3" aluminium	1
111	710 53 04	Discharge connection DN 75 Thread: ISO G3A Outer aluminium DN 75 Hose Thread: ISO G3A Outer Second outlet included aluminium DN 75 Thread: ISO G3A Outer Quick coupling: Storz aluminium	1
111	710 53 05	Discharge connection DN 75 Thread: NPT 3-8 Outer aluminium	1
112	82 35 76	Plain washer 10-A4-170HV	2
113	82 23 33	Hexagon nut M10-A4-70	2
114	81 78 95	O-ring 56.52X5.34 NBR	1
125	763 03 00	Zinc anode kit	1
130	554 23 52	Starter Start 156-B Single phase 50 Hz 220V - 240 V - 10 A Overload supervision Supply connection on terminal Cable gland diameter: 13 - 20 mm CSA approved	1

Pos. No	Part. No	Denomination	Qty/Version
			281
130	554 23 53	Starter	1
		Start 156-B Single phase 60 Hz 220V - 240 V - 10 A Overload supervision Supply connection on terminal Cable gland diameter: 13 - 20 mm CSA approved	
130	593 04 29	Starter	1
		151 Single phase 50 Hz 220V - 240 V - 10 A Overload supervision Supply connection on terminal Cable gland diameter: 13 - 18 mm CSA approved	
130	593 04 30	Starter	1
		161 Single phase 60 Hz 220V - 240 V - 10 A Overload supervision Supply connection on terminal Cable gland diameter: 13 - 18 mm CSA approved	
130	648 36 03	Starter	1
		350 3-phase 50 Hz 380V - 415 V Current range: 4 - 6,30 A Overload supervision Phase sequence indicator Supply connection CEE 5-PLUG 16A Cable gland diameter: 10 - 20 mm Not CSA approved	
130	648 36 13	Starter	1
		350 3-phase 50 Hz 380V - 415 V Current range: 4 - 6,30 A Overload supervision Phase sequence indicator Supply connection CEE 5-PLUG 32A Cable gland diameter: 10 - 20 mm Not CSA approved	
130	648 36 44	Starter	1
		350 3-phase 50 Hz 220V - 240 V Current range: 6,30 - 9 A Overload supervision Phase sequence indicator Supply connection on terminal Cable gland diameter: 10 - 20 mm Not CSA approved	
130	648 36 43	Starter	1
		350 3-phase 50 Hz 415V - 440 V Current range: 4 - 6,30 A Overload supervision Phase sequence indicator Supply connection on terminal Cable gland diameter: 10 - 20 mm Not CSA approved	
		350 3-phase 50 Hz 380V - 400 V Current range: 4 - 6,30 A Overload supervision Phase sequence indicator Supply connection on terminal Cable gland diameter: 10 - 20 mm Not CSA approved	
130	648 36 42	Starter	1
		350 3-phase 50 Hz 500V - 500 V Current range: 2,50 - 4 A Overload supervision Phase sequence indicator Supply connection on terminal Cable gland diameter: 10 - 20 mm Not CSA approved	
130	554 30 03	Starter	1
		351 3-phase 50 Hz 380V - 415 V Current range: 4 - 6,30 A Overload supervision Phase sequence indicator Supply connection CEE 5-PLUG 16A Cable gland diameter: 10 - 20 mm Not CSA approved	
130	554 30 13	Starter	1
		351 3-phase 50 Hz 380V - 415 V Current range: 4 - 6,30 A Overload supervision Phase sequence indicator Supply connection CEE 5-PLUG 32A Cable gland diameter: 11 - 21 mm Not CSA approved	

Pos. No	Part. No	Denomination	Qty/Version
			281
130	554 30 43	Starter	1
		351 3-phase 50 Hz 380V - 415 V Current range: 4 - 6,30 A Overload supervision Phase sequence indicator Supply connection on terminal Cable gland diameter: 11 - 21 mm Not CSA approved	
130	554 30 72	Starter	1
		351 3-phase 50 Hz 500V - 500 V Current range: 2,50 - 4 A Overload supervision Phase sequence indicator Supply connection CEE 4-PLUG 32A Cable gland diameter: 11 - 21 mm Not CSA approved	
130	554 30 52	Starter	1
		351 3-phase 50 Hz 440V - 500 V Current range: 2,50 - 4 A Overload supervision Phase sequence indicator Supply connection on terminal Cable gland diameter: 11 - 21 mm Not CSA approved	
130	554 30 64	Starter	1
		351 3-phase 50 Hz 220V - 240 V Current range: 6 - 10 A Overload supervision Phase sequence indicator Supply connection on terminal Cable gland diameter: 11 - 21 mm Not CSA approved	
130	554 20 05	Starter	1
		356 3-phase 60 Hz 200V - 208 V Current range: 9 - 14 A Overload supervision Supply connection on terminal Cable gland diameter: 13 - 25 mm CSA approved	
130	554 20 04	Starter	1
		356 3-phase 60 Hz 220V - 240 V Current range: 6 - 10 A Overload supervision Supply connection on terminal Cable gland diameter: 9 - 18 mm CSA approved	
130	554 20 03	Starter	1
		356 3-phase 50/60 Hz 380V - 415 V Current range: 4 - 6 A Overload supervision Supply connection on terminal Cable gland diameter: 9 - 18 mm CSA approved	
		356 3-phase 60 Hz 440V - 480 V Current range: 4 - 6 A Overload supervision Supply connection on terminal Cable gland diameter: 9 - 18 mm CSA approved	
130	554 20 02	Starter	1
		356 3-phase 60 Hz 575V - 600 V Current range: 2,50 - 4 A Overload supervision Supply connection on terminal Cable gland diameter: 9 - 18 mm CSA approved	
130	554 21 05	Starter	1
		356 3-phase 60 Hz 200V - 208 V Current range: 9 - 14 A Overload supervision Supply connection on terminal Cable gland diameter: 13 - 25 mm CSA approved	
130	554 21 04	Starter	1
		356 3-phase 60 Hz 220V - 240 V Current range: 6 - 10 A Overload supervision Supply connection on terminal Cable gland diameter: 13 - 25 mm CSA approved	

Pos. No	Part. No	Denomination	Qty/Version
			281
130	554 21 03	Starter 356 3-phase 50/60 Hz 380V - 415 V Current range: 4 - 6 A Overload supervision Supply connection on terminal Cable gland diameter: 13 - 25 mm CSA approved 356 3-phase 60 Hz 440V - 480 V Current range: 4 - 6 A Overload supervision Supply connection on terminal Cable gland diameter: 13 - 25 mm CSA approved	1
130	554 21 02	Starter 356 3-phase 60 Hz 575V - 600 V Current range: 2,50 - 4 A Overload supervision Supply connection on terminal Cable gland diameter: 13 - 25 mm CSA approved	1
130	554 25 03	Starter BCD 4 3-phase 50 Hz 380V - 415 V Current range: 3,70 - 5,50 A Overload supervision Phase sequence indicator Supply connection CEE 5-PLUG 16A Cable gland diameter: 13 - 18 mm Not CSA approved	1
130	554 25 13	Starter BCD 4 3-phase 50 Hz 380V - 415 V Current range: 3,70 - 5,50 A Overload supervision Phase sequence indicator Supply connection CEE 5-PLUG 32A Cable gland diameter: 13 - 18 mm Not CSA approved	1
130	554 25 43	Starter BCD 4 3-phase 50 Hz 380V - 415 V Current range: 3,70 - 5,50 A Overload supervision Phase sequence indicator Supply connection on terminal Cable gland diameter: 13 - 18 mm Not CSA approved	1
800	779 80 00	O-ring kit NBR	1
801	763 03 00	Zinc anode kit	1
816	779 98 00	Wear part kit MT, 50HZ, D-IMP. CURVE CODE:233	1
816	779 98 01	Wear part kit MT, 60HZ, D-IMP. CURVE CODE:235	1
816	779 98 02	Wear part kit MT, 60HZ, D-IMP. CURVE CODE:236	1
900	779 86 00	Basic repair kit NBR TYPE P SSIC/SSIC	1



ООО «Бауманс Груп» - официальный партнер фирмы Flygt в России.

Тел: +7 495 121 49 50

Эл. почта: info@baumgroup.ru

Сайт: www.baumgroup.ru